



CONCILIUM

2025 Ministry Guide

A document that outlines the capabilities of Concilium, our heart for the Gospel, how to pray for the ministry, and why Concilium's ministry is worthy of your support.



www.concilium.us



@Conciliumonline



@ConciliumInc

P.O. Box 28308
Kansas City, Missouri 64188

CONCILIUM: A MINISTRY LIKE NO OTHER



HELPING GOSPEL WORKERS AND PERSECUTED CHRISTIANS THRIVE WHERE THE LORD HAS PLANTED THEM; FOR HIS GLORY AND THEIR GOOD!

At Concilium, our calling is to share the Gospel as we help Christians around the world effectively minister and thrive where God has planted them. This effectiveness is possible when Christians steward well their safety and security, especially in hard and dangerous places. Far from being a secular endeavor, Concilium helps Christians around the world to see that security, while practically applied, is spiritually discerned. This is what makes safety and security for Christians different from the secular world (1 Cor. 2:14).

Concilium's biblically based, gospel-centered approach brings the practical application of Romans 12:2 to the understanding of security. We help God's people to be transformed in their thinking about security from the pattern of the world as they take to themselves the mind of Christ through a biblical view of risk. This, in turn, helps those we serve to better prove what the will of God is; a will that is good, acceptable, and perfect!

At Concilium, we see our ministry as an act of biblical stewardship; the stewardship of time, resources, and lives. Whether helping organizations traverse and recover from a critical incident, develop ministry and business continuity planning, or training gospel workers to thrive in ever-changing threat environments, the mission and ministry of Concilium is to empower the Gospel in the nations. We accomplish this through wise and prudent security and crisis management programs and strategies that hold the Gospel as the highest value, the safety of God's people on mission as the highest priority, and Great Commission obedience as the highest commitment. Concilium is truly helping Gospel workers thrive and remain effective in the nations!

Concilium Key Competencies and Areas of Focus:



TRAINING



POLICY DEVELOPMENT



CONTINGENCY PLANNING



RISK & CRISIS MGMT



CRISIS COMMUNICATIONS



VIOLENT CRIME



POLITICAL UNREST



TERRORISM



KIDNAP & DETAINMENT



RESTRICTED ACCESS

EXPERTISE THAT IS WORLD CLASS AND GOSPEL CENTERED

Concilium was founded by experts with decades of experience in both security and Great Commission endeavor. We employ personnel with diverse backgrounds including former military and special operations, federal law enforcement, diplomatic security, strategic intelligence, missionaries, and pastoral and member care experts.

Concilium is the **ONLY** organization of its kind to provide a comprehensive suite of support, resources, and expertise exclusively to those who believe wholeheartedly in the Great Commission.



P.O. Box 28308
Kansas City, Missouri
64188



Toll Free
833-265-SAFE



www.concilium.us



info@concilium.us

CONCILIUM SECURE: SECURITY-RISK & CRISIS MANAGEMENT



CONCILIUM

Since 2014, Concilium has been a leader in the practice of security, risk, and crisis management consulting for faith-based organizations. What has made Concilium's consulting so respected in the faith-based community is our commitment to the Gospel as our highest value and the safety of God's people as our highest priority. Our commitment to Christ and pursuit of excellence challenges us to grow and transform as we meet the needs of faith-based workers in a world with a constantly shifting threat landscape.

Concilium's team of security experts regularly consults on security, risk, and crisis management challenges facing US mission agencies in open and closed countries. Concilium understands the nuances of restricted access ministry and regularly provides consulting and guidance in restricted access locations.

Concilium relies on the faithful giving of our supporters to make our security and consulting resources available to gospel workers and persecuted Christians who need our services but cannot afford them. Your faithful support makes this ministry possible!



West Africa:
Hospital Security Assessment

THREAT: Boko Haram Attack
RESPONSE: Assessment & Training

Concilium was contacted by a hospital ministry in West Africa out of concern due to a growing number of attacks and kidnappings near their hospitals. There was serious concern that the hospitals would have to shut down due to the threat.

In response, Concilium sent a team to provide physical security assessments and personal security training for hospital staff.

As a result of the assessment and security training, these hospitals are still open today serving in the name of Jesus!



East Africa:
Evangelism Team Extraction

EVENT: Anti-Christian Riot
RESPONSE: Extraction

Concilium was contacted by a ministry in East Africa whose expat team members and local partners were attacked by a crowd during a Gospel presentation.

In response, Concilium used its connections with national and international authorities to secure and transport both the expats and local partners and safely relocate them to the capital and safety.



Haiti:
Kidnap for Ransom

EVENT: Kidnap for Ransom
RESPONSE: Crisis Negotiation

An American missionary and her child were kidnapped in Haiti. Concilium was called to provide crisis negotiation and recovery services as well as consultation for organizational media strategy and member care services.

Concilium was able to safely recover both mother and child as our team managed communication strategies and member care response.

Crisis management is a ministry with high stakes. The needs are great and the ramifications are even greater if handled poorly. Concilium relies on the generous support of donors who make our crisis management ministry possible for gospel workers and persecuted Christians around the world. Please help us help others in crisis!



P.O. Box 28308
Kansas City, Missouri
64188



Toll Free
833-265-SAFE

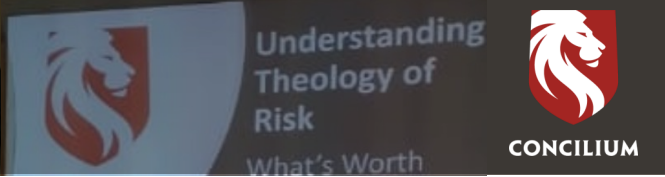


concilium.us/SECURE



info@concilium.us

CONCILIUM EQUIP: PERSONAL SECURITY TRAINING



Since 2014, Concilium has trained more than 5000 gospel workers from around the world in nine languages, including American Sign Language. Concilium provides training for traditional missionaries serving in open countries, restricted access workers serving where traditional missionaries are not allowed, humanitarian workers who find themselves serving in complex and dangerous humanitarian environments, and persecuted Christians living in countries opposed to Jesus. To meet the needs of the global church, Concilium offers the following programs:

Security Training for Individuals and Teams



Security-Risk and Crisis Management Courses

TSO

**Travel Safety Orientation
Online Travel Security Training**

Concilium's TSO is an online security training that builds good security practices from a solid biblical foundation. The TSO is built upon Concilium's foundation of Security In the Context of Ministry (SICM), as well as the key principles of threat assessment, abatement, and mitigation.

SRM

**Introduction to Security-Risk Management
2 Day Course**

Security Risk Management helps organizations decrease the likelihood of a critical incident on the mission field by helping leaders implement effective security management programs that decrease organizational vulnerabilities to threats while decreasing the impact of critical incidents through contingency planning.

CAST

**Comprehensive Awareness Security Training
1-3 Day & 3.5 Day Field Security Course**

Concilium's CAST 1-3-day courses focus on threat assessment, abatement, and mitigation. CAST provides primary safety and security skills for individuals and teams in the field, including training team members, spouses, and mature children how to avoid crime and victimization abroad (NOTE: FSC includes field training exercises not offered with the 1-3 Day CAST program).

CMF

**Crisis Management Foundations
2 Day Course**

Concilium's Crisis Management Foundations is a crisis management seminar designed for leadership and staff at home and abroad who may find themselves managing organizational crises. Whether at headquarters or on the field, this course is a powerful crisis management resource!

RACE

**Restricted Access/Complex Engagement
1-3 Day & 3.5 Day Field Security Course**

Concilium's RACE program focuses on safety and security for gospel workers serving in countries and areas that are legally, socially, and culturally opposed to the Gospel. Training is similar to CAST but RACE focuses on those seeking to protect and maintain their legitimacy in country as well as their safety (NOTE: FSC includes field training not offered with 1-3 day programs).

SRCM

**Security-Risk/Crisis Management
3-3.5 Day Course**

Concilium's SRCM course combines the SRM and CMF into one course. When privately contracted, the SRCM can be run in conjunction with security management consulting and crafted to help organizations implement or improve their current security management. Concilium often runs SRCM in conjunction with our Field Security Courses in Kansas City as a 3.5 day course.

HEAT

**Hostile Environment Awareness Training
2-10 Day Programs Available**

Concilium's HEAT program helps Gospel workers and humanitarians maintain their safety in complex and hostile environments, including warzones. Concilium's HEAT courses provide participants with the know-how and skills to deal with credible threats in areas prone to violent conflict, terrorism, acts of war, state detainment, and kidnapping.

Concilium's calling as a ministry is to help Christians thrive where the Lord has called them and remain effective where He has planted them. Your donations make Concilium's training available all over the world!



P.O. Box 28308
Kansas City, Missouri
64188



Toll Free
833-265-SAFE



concilium.us/EQUIP



info@concilium.us

CONCILIUM INSIGHT: STRATEGIC ANALYSIS AND GUIDANCE



Concilium Insight: An Unmatched Resource

Concilium Insight is Concilium's threat analysis program. Since 2014, Concilium has produced over 2500 analytical reports for more than 50 subscribing organizations. Insight was the first Concilium department to begin operations in 2013 and it remains the premier provider of open-source threat analysis for Christian organizations and churches.

Insight's operations are strongly integrated with Concilium's security and crisis management programs, providing crucial support to crisis management consultants and response teams guiding clients and beneficiaries through active crises.

Insight's work has been utilized all over the world, including 60 consecutive days of research and production for multiple audiences during the US evacuation from Afghanistan in August 2021, strategic guidance for more than 100 organizational users during the opening days of Russia's invasion of Ukraine, and analysis and support for more than 100 organizations impacted by the war between Israel and Hamas. Insight's team of full-time, part-time, and volunteer analysts produce analysis applicable at strategic, operational, and field levels for faith based organizations.



Multiple subscribers have described Insight's reports and briefings as having equal or higher quality to comparable products available for business and government clientele.

Across the United States and around the world, the occurrence of conflict, terrorism, crime, and related persecution is a key indicator of spiritual need and correlates closely with how difficult an area is to reach with the Gospel. Concilium Insight is helping organizations, churches, and Gospel workers understand both the threats posed, and the needs exposed, by these issues. Threat analysis is essential to "counting the cost" of Great Commission obedience. Concilium Insight connects with

Concilium clients and constituents more frequently and regularly than any other department, using analysis of conflict, terrorist, and criminal threats to provide continuity between training classes, consultations, and conferences.

While the mission of Concilium Insight is to provide analysis of conflict, terrorism, crime, and related persecution issues to those who need it the most, MOST cannot afford these resources because of the cost. Your financial support makes the ministry and work of Concilium Insight accessible to those who need it by keeping our prices affordable. Your giving to Insight helps gospel workers count the cost of obedience in the nations!



P.O. Box 28308
Kansas City, Missouri
64188



Toll Free
833-265-SAFE

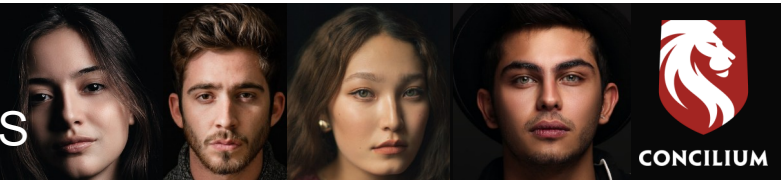


concilium.us/INSIGHT



info@concilium.us

CONCILIUM CARE: MEMBER CARE RESOURCES

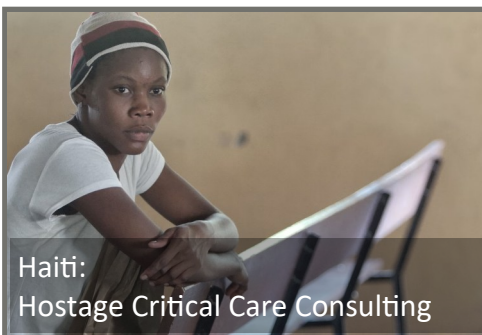


Concilium Care is dedicated to helping Christian missionaries, humanitarians, and restricted access gospel workers thrive. Concilium does this by helping them build healthy self care and resilience into Great Commission obedience. Concilium understands that far too many security incidents begin as member care issues. As such, the healthier gospel workers are on the mission field, the more effectively they were serve!

Concilium Care: A Ministry that is Needed Now

Apart from providing emotional and spiritual support for Concilium’s deployed families and personnel, Concilium Care also provides services and resources for Gospel workers domestically and overseas. This includes member care consulting to include deployment preparation, debriefing for gospel workers returning from the field, and critical incident debriefings for workers facing emotional trauma.

Concilium’s member care program is a donor supported ministry that is worthy of investment—and your investment in Concilium’s success pays immediate dividends in the lives of Christians around the world.



Haiti:
Hostage Critical Care Consulting

NEED: Critical Care Consulting
RESPONSE: Member Care Expertise

After the successful recovery of a kidnapped team member of a Haitian ministry, Concilium was asked to provide member care consulting for best practice in critical care of the victim.

Concilium Care provided the organization with wise counsel on best practices for ministering to the emotional and spiritual needs of trauma victims, including survivors of kidnapping. Concilium’s guidance helped the organization begin the healing process by compassionately addressing the physical, emotional, and spiritual needs of the victim.



Ukraine:
Critical Incident Stress Debriefing

NEED: Missionary Debriefing
RESPONSE: Deploy and Serve

A mission agency contacted Concilium to provide debriefing services for missionary families and individuals evacuating Ukraine.

Concilium deployed a START (Security, Triage Assessment, and Response Team) to respond to the crisis. The START team met with the mission agency’s team members as they arrived in a third country outside Ukraine.

The team assessed the physical, emotional, and spiritual needs of evacuees, including addressing emotional traumas faced by different team members and their children.



North American Training:
Critical Care Assessment

NEED: Critical Care Assessment
RESPONSE: Consultation & Referral

During a Concilium security training in North America, a student began to exhibit irrational behavior during different immersion exercises.

It quickly became apparent that the student in question was struggling with unresolved trauma that had not been disclosed to the sending organization or to Concilium.

Concilium was able to contact the sending organization, share key observations and concerns, and provide recommendations for follow up. As a result, the sending organization was able to provide professional care and successfully deploy the worker to the field.



P.O. Box 28308
Kansas City, Missouri
64188



Toll Free
833-265-SAFE



concilium.us/CARE



info@concilium.us

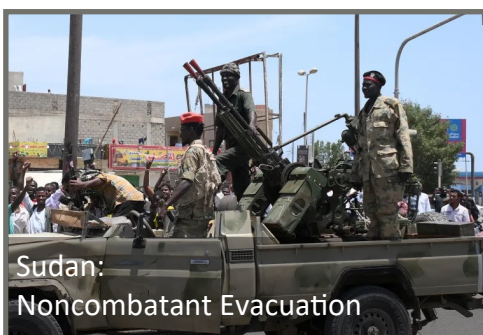
CONCILIUM ENGAGE: PUBLIC SECTOR ENGAGEMENT



Concilium intentionally shares the Gospel as we engage public and private sector leaders on behalf of faith-based workers and persecuted Christians around the world. We accomplish this through public and private sector engagement, developing faith partnerships, and championing the needs of faith based workers and persecuted Christians whose lives and freedom are being threatened.

Concilium is committed to private and public sector engagement on behalf of faith based workers and persecuted Christians in need. Domestically, this includes engaging public and private sector entities to raise awareness of, and support for, the acute needs faced by faith based workers held against their will and their families desiring their return. Concilium is committed to pressing the needs of faith-based workers (and their families) through public policy engagement. Likewise, Concilium is committed to supporting persecuted Christians in the nations via public and private sector partners as well as building public awareness toward the plight of persecuted Christians and their physical, emotional, and spiritual needs around the world.

Concilium depends on the generous giving of our friends and supporters to make this engagement possible. Please consider a making a regular monthly donation to Concilium as we engage key leaders on behalf of missionaries!



Sudan:
Noncombatant Evacuation



Ukraine:
Civil-Military Engagement



PPD 30:
US Public Policy Engagement

NEED: Evacuation Coordination
RESPONSE: State Dept. Engagement

When gunfire and explosions rocked Khartoum, Sudan the unexpected conflict sparked the largest noncombatant evacuation operation in more than a decade.

Concilium began coordination with the US State Department's Overseas Advisory Council, American Citizen Services and other US entities for ground and surface evacuation from Port Sudan.

Concilium's response and coordination efforts not only saved lives, but were publicly recognized by US State Department.

NEED: Strategic Intelligence
RESPONSE: Civ-Mil Engagement

The Russian invasion of Ukraine, created the largest humanitarian disaster in Europe since World War II.

Immediately after the invasion began, Concilium's START (Security Triage Assessment and Response Team) engaged the United States Army's Task Force 82 to help develop the sharing of critical intelligence with US faith-based and private sector partners.

Concilium's keen understanding civil-military relationships makes opportunities like this possible.

NEED: Faith Based Policy Influence
RESPONSE: White House Invitation

In 2015, the President of the United States issued Presidential Policy Directive 30 (PPD 30), an Executive Order on the recovery of U.S. hostages taken abroad.

Concilium's leadership has been invited to the White House as well as other US Government agencies pertaining to PPD 30, including hosting a National Hostage Policy Roundtable in 2024.

Concilium continues to engage with key leaders from multiple branches of government on behalf of faith based workers globally.



P.O. Box 28308
Kansas City, Missouri
64188



Toll Free
833-265-SAFE



concilium.us/ENGAGE



info@concilium.us

TOWARD SUCCESS: WE NEED YOU!

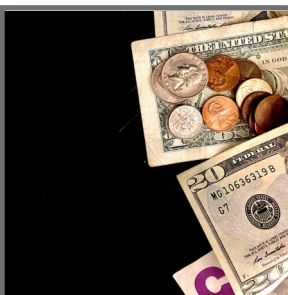


CONCILIUM

The truth is that security-risk and crisis management services and resources are expensive. Gospel workers and persecuted Christians around the world regularly struggle with ministry effectiveness because they lack access to even basic security-risk and crisis management services that are critical to their basic welfare.

Concilium exists to empower kingdom advance by caring well for God's people and building their ministry effectiveness. We do this by providing our services and resources well below market cost and even for free. That's why Concilium needs your support. Your giving makes it possible for faithful men and women to bring their knowledge and expertise to gospel workers and persecuted Christians who need it the most.

The work of Concilium is impossible without the faithful financial support of people like you. Please consider becoming a regular Concilium ministry supporter via the options below!



Single Donations. Many of Concilium's donations come as individual donations. Single donations are a nice way to bless the ministry. There are also occasions and holidays to consider when making donations:

Anniversary Dedication, Birthday Dedication, Congratulations, Encouragement, Baptism, First Communion, Get Well, Christmas, Easter, Father's/Mother's Day, etc.



Recurring Donations. One of the most effective ways to empower the Gospel through Concilium's ministry is through a monthly recurring donation. Setting up a donation is simple by visiting www.concilium.us/DONATE. By establishing a monthly recurring gift Concilium and those we serve can benefit knowing that we can depend on you. That's because your monthly giving is felt around the world providing help and hope through Concilium's global ministry to those who need it most.



Non-Cash Donations. Generous giving is not limited to giving cash or checks. You can benefit our ministry in many different ways through physical assets. Turn your tangible goods such as , cars, boats, jewelry, commodities, real estate, mineral rights, and more into ministry impact while realizing potential tax benefits. As an example, if you have an old car or truck that runs, consider giving that to Concilium to use in our security training and enhance the training experience of our students!



Legacy Donations. Your legacy can impact generations around the world. As you consider your legacy through your estate plan, Concilium is available to serve you. Your estate gift can take many forms, such as including Concilium in your will, establishing gifts that return income during your lifetime, and more. We are happy to work with you to help you identify the best options to suit your charitable goals.



P.O. Box 28308
Kansas City, Missouri
64188



Toll Free
833-265-SAFE



concilium.us/DONATE



info@concilium.us